



# Awareness

A newsletter for the staff, physicians and volunteers of Central Washington Hospital

June 4, 2010

## Coming Soon: UNUM Voluntary Benefits Enrollment

*Cindy Shales, Benefits and Compensation Specialist*

Effective **Sunday, August 1**, we will be offering voluntary benefit products through UNUM. Previously, these products were offered through AFLAC. Employees who currently have AFLAC will be able to continue their current coverage by paying AFLAC directly; however, we encourage all employees to learn more about the new UNUM products by meeting with an enrollment counselor.



We are pleased to announce that we are partnering with Unum Workplace Solutions, a national enrollment vendor, to provide personalized, one-on-one enrollment sessions and communication materials for every employee. Meet with a benefits counselor to review your current benefits, become informed about your new options, and enroll in Voluntary Short Term Disability, Accident, Critical Illness, and Long Term Care with Guarantee Issue. **Enrollment dates are Tuesday, June 15 through Friday, June 25.**

It is very important that every Central employee understands their benefit options. Signing up is easy! Go to iCentral and click on the Benefits button on the left-hand side of the page. Enrollers are assigned to locations throughout the Hospital for your convenience. Select your department and click on the date for times. If you cannot find a day/time that works within your specific department, check out the "All Employees" options.

## Reduced Rates for Supplemental Life and LTD Insurance through Lincoln Financial

Central signed a new contract with Lincoln Financial, the carrier for our Life Insurance and Long Term Disability. Supplemental Life and Long Term Disability rates have decreased; the new reduction in rates will be applied to pay checks dated June 4, 2010. If you are interested in applying for Supplemental Life insurance, the rates, application and Evidence of Insurability forms are available on iCentral. Click on the Benefits button on the left-hand side of the page.

## Dennis Key Memorial Golf Tournament

**Saturday, June 12** Highlander Golf Club

### Contacts:

**Steve Jacobs:**

[sjacobs@cwhs.com](mailto:sjacobs@cwhs.com)

**Jack Powers:**

[jpowers@cwhs.com](mailto:jpowers@cwhs.com)



## Inside...

- Construction Update
- Jeans Day for *Our House*
- Enter to Win Free Central Logo Apparel
- ACE Institute Tours Central
- Free MS Office Training

## Street Rod Club Reaches GOLD Donor Status



Wenatchee Valley Street Rod members (left to right) Marlin Lannoye, Don Brawley and Brian Egan proudly point to their club's GOLD level plaque recently installed on the Hospital Donor Wall.

The club has donated more than \$100,000 to the Hospital since 2001 from proceeds of their classic car show held each June at Confluence Park. Their Street Rod scholarship program, established in 2005, has provided \$18,000 to Central employees for higher education.

# Awareness

## Welcome New Employees



Welcome new employees (l-r): Carl Polson (Education), Cara Adamek (Dietary), Pam Radcliffe (Admitting), Carolina Davila (Environmental Services), Jennifer Dillon (Wenatchee Ortho)



## Enter To Win Free Logo Apparel

Last week, Central announced the adoption of a new Hospital logo. To celebrate, we're holding random prize drawings for apparel featuring the new Central Washington Hospital logo\*.

Employees, physicians and volunteers are eligible to enter. To enter, complete the entry form below and route via interoffice mail to the [Word Processing](#) department.

**Deadline for entry is Wednesday, June 9.** Drawings will take place on **Thursday, June 10.** Winners will be contacted via email, and a listing of winners will be posted on iCentral no later than **Friday, June 11.**

\*Ten winners will receive a gift certificate for one logo apparel item, valued at up to \$50.

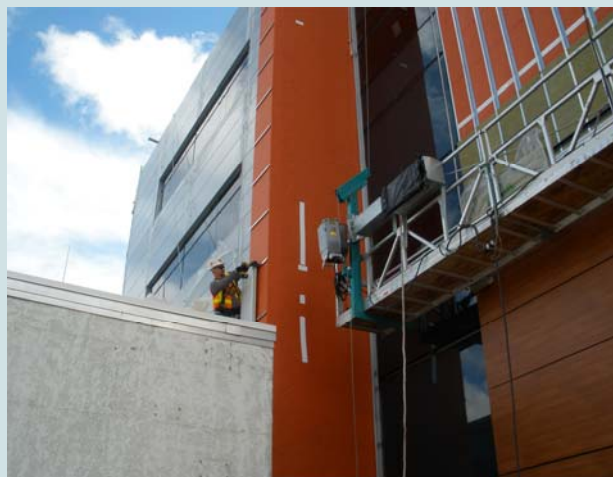
### Logo Apparel Random Prize Drawing Entry Form

Name: \_\_\_\_\_

Department: \_\_\_\_\_

*Route via interoffice mail to Word Processing.  
One entry per person. Deadline for entry is Wednesday, June 9.  
Ten winners will receive a gift certificate for one logo apparel item,  
valued at up to \$50.*

## Construction Summary



### Summary of Construction May 31–June 4, 2010

Production of metal stud wall framing is proceeding on floor one and two. Mechanical, electrical and plumbing rough-in was inspected, and production drywall install has started in zone two. The glazing contractor has set the aluminum for the curtain wall, and is 85% complete glazing install at the south elevator bump-out. The glazer has installed 60% of the aluminum and 75% of the glass in the ribbon window openings (*see photo above*). Exterior wood panel system has started on the south elevation.

### Summary of Construction June 7-11, 2010

Wall framing will continue on the first and second floors, so that mechanical, electrical and plumbing in-wall rough-in can continue. Production drywall will progress at the ground floor in zones two and three. Exterior wood wall panel system install will continue on the south elevation of the building.

---

Note: Thank you for everyone's patience with the construction activities. Please contact Greg Rosinski, Project Superintendent at (206) 778-8763 or Gene Hodge, Project Manager at (509) 885-4246 if there are any specific concerns related to construction activities.

# ACE Institute Students Tour Central

*Marilyn Brincat, Student Services Specialist*

Last Friday, May 28, four high school students and two escorts from the local Achieving Character Excellence Institute (ACE) toured our facility and were treated to some special speakers.

ACE (Achieving Character Excellence) Institute is a program offered to high school students through Wenatchee Valley College and the Presbyterian Church. Students are selected by high school counselors and teachers to apply to the program, and if they complete the monthly meetings and tours of many local career choices, they receive a \$1,000 scholarship to Wenatchee Valley College.

The students had a great afternoon listening to presentations by Dr. Tuszynski and Andrea Goodwin of Wenatchee Valley Medical Center, Elmo Ancar (Critical Care), Rachel Markey (Surgery) and Amy Berkompas (Cath Lab). In addition, they toured the OR, the Cath Lab and the Pharmacy.

Special thanks to the speakers, and also to Anne Wagg (Administration), Tom Collie (DI), Doug Fischer (Pharmacy) and Art Kirk (Pharmacy) for their assistance in making this event a great success.



## Take the EMR Post-Implementation Survey

All employees who participated in online training for the eCentral (Cerner EMR) implementation are asked to complete a short survey created by The Breakaway Group. A link to the survey is on iCentral under *CWH News*.

NOTE: Some users have attempted to take the survey from a home computer, and have experienced difficulties accessing the site. It is recommended that users take the survey from a Hospital PC.

## Central Offers Free Computer Training Skills for Employees

*Kim Anderson  
Computer Technology Educator*

If you are feeling like you need to improve your Microsoft Office computer skills, try the training Central has purchased for you.

Last year, more than 5,500 courses were taken by our staff here, totaling approximately 200 hours of free training.

Start learning today at: <http://login.customguide.com/cwhs>.

More information and login help found on iCentral at: <http://icentral/ERC/msoffice.aspx>.

## Central's Relay for Life Team Raises \$2,000

A big "thank you" from the Central Washington Hospital Cure Bears to everyone who bought a Hawaii raffle ticket and/or a footprint to raise money for the American Cancer Society.

The winners of the two Hawaii trips were Dawn Crauley and Bette Adams.

Also, a big "thank you" to *J.B Steamers* for selling the footprints.

Our fundraising efforts raised a total of \$2,000.

We will be back next year with LOTS of fun fundraisers. Thanks again for all your help!

**Colleen Adamek**  
(Nutrition Svcs)

# Awareness

## OUR HOUSE JEANS DAY PARTICIPATION FORM

Name: \_\_\_\_\_

Dept: \_\_\_\_\_ Ext: \_\_\_\_\_ Donation \$: \_\_\_\_\_  
(\$5.00 minimum)

Make checks payable to *Our House*.

Return with donation to Becky Konrad in Administration. Thanks!

## Jeans Day for *Our House* is Friday, June 11

Make a minimum \$5 donation to *Our House* and wear jeans to work on Friday, June 11.

All proceeds will benefit *Our House*, a housing facility for patients who are receiving cancer treatment here in Wenatchee but live out of the area. Bring your donation to Becky Konrad in Administration.

Please check with your director for approval, and be sure to leave the ripped, frayed, skin-tight look at home.

### HOW TO PLACE A CLASSIFIED AD

- 1) On the web, visit iCentral. Click the *Classifieds* link under the *Coffee Break* section on home page. Click *Submit a Classified* and complete the form.
- 2) Complete the paper form available outside the Community Relations Office.

Include your name and home or cell phone. Include work ext. and full name for verification or questions. Ads will not be accepted without an employee name and extension. *Staff only!* Exceptions: employee's school-age child offering babysitting, lawn mowing, etc. Classified ads will run once unless otherwise requested. **No businesses.** We reserve the right to edit or reject any ad.

### Employee Assistance Program

For an appointment, call M-F, 8-5  
1-800-999-1077

- Stress
- Parenting
- Aging
- Drugs/Alcohol
- Depression
- Grief
- Relationships
- Work
- Abuse
- Eating Disorders
- Finances
- Marriage

For 24-hour, seven days a week  
crisis counseling, call

1-800-833-3031

Completely Confidential

## Awareness

The *Awareness* is published every Friday for the staff, physicians and volunteers of Central Washington Hospital.

Senior Editor: Kathy Hamilton  
Managing Editor: Debby Martin  
Photographer: Anne Wagg

**Deadline for information is  
Wednesday, 9:00 a.m.** Articles must be submitted in writing or emailed to Kathy Hamilton or Debby Martin in Community Relations.

Current and back issues of the *Awareness* are available online at iCentral. Click the link at the top of the *CWH News* Section.



### MISSION

In its tradition of service, Central Washington Hospital responds to community needs by providing quality health care through caring, competence and accountability.



## classifieds

**FOR SALE:** Olympus Camedia C700 digital camera, with CD, cable and case. Great camera. \$60. Call Julie at 884-0744.

**FOR SALE:** CStar Telescope, model T6525, 525 power, focal length 700mm. Included is a \$30 Sky at Night book set. \$40. Call Julie at 884-0744.

**FOR SALE:** Beautiful, quality plus size clothing. Jackets, sweaters, pants, blouses. Prices vary. Call Sandy at 630-1888.

**FOR SALE:** Twin bed mattress, box spring, black metal headboard and three sets of sheets. \$150/obo. Call April at 393-3244.

**WANTED:** Broken or non-functional VCR, DVD player, radio, stereo or other small appliance that does not contain glass. Call Billie at 665-5925.

**FOR SALE:** Vari Kennel Pet Carrier, extra durable, portable dog kennel for airline, auto transportation, crate training. Wire doors and vents. Giant size for large dog, measures 48" L x 32" W x 35" H. \$150. Call 884-2473 or 679-2376.